

Method Parameters

Analysis Lines

Label	El Wavelen.	Type	I/S	Bkg Mode	PPP	OBCL	OBCR
Ag 328.068	Ag 328.068	Analyte	-	Fitted	2		

Conditions Sets (All lines share a single condition set)

Pwr(kW)	PlasFlow(L/min)	AuxFlow(L/min)	NebFlow(L/min)	Replicate	Time(s)	Stab Time(s)	Multi Frame
1.20	15.0	1.50	0.75	5.000	15	On	

Sample Introduction

Sample Uptake(s)	Rinse Time(s)	Pump Rate(rpm)	Fast Pump
30	10	15	On

General Settings

Replicates
3

Calibration Settings

Calib. Mode	No. Standards	Corr Coeff Limit	Reslopes
Quantitative	1	0.995000	Off

Standard Concentration

El Units	Silver
Ag ppm	10.00000

Calibration Parameters

Label	Thru. Blk	W/Fit	Curve Type	Max Error	Min Conc	Max Conc	E/Curve %	U/Curve %
Ag 328.068	Off	On	Linear	5.0	0.00000	11.00000	25	400

Units

Unit Name	Multiplier	Divider
ppm	1	1E6

Columns

Column
Ag 328.068

Display Column Flags

Column	o	QC	S	e	uncal	I	n	a	u	v	x	b	p	m	d
Ag 328.068	x	x	x	x	x	x	x	x	x	x	x	x	x	x	x

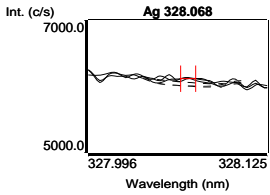
Blank (Blk)

3/4/2011, 11:22:36 AM

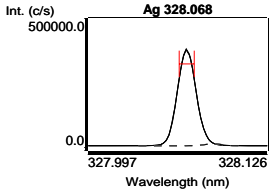
Tube 1

Label	Sol'n Conc.	Units	SD(Int)	%RSD(Int)	Int. (c/s)
Ag 328.068	0.000000	ppm	24.792	26.9	92.1108

Argento Laser di Ferioli -2. All Data Report 2/2/2012, 4:25:43 PM



Silver (Std)	2/2/2012, 4:18:03 PM	Tube 2			
Label	Sol'n Conc.	Units	SD(Int)	%RSD(Int)	Int. (c/s)
Ag 328.068	10.0000	ppm	1683.463	0.5	317571



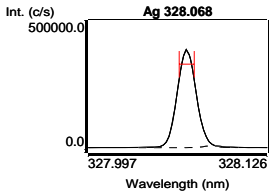
Ag 328.068 Calibration (ppm) **2/2/2012, 4:18:03 PM** **Correlation Coefficient: 1.000000**

Label	Flags	Int. (c/s)	Std Conc.	Calc Conc.	Error	%Error
Blank		92.1108	0.000000	0.000000	-	-
Silver		317571	10.0000	10.0000	0.000000	0.0

Curve Type: Linear Equation: $y = 31747.9 x + 92.1$

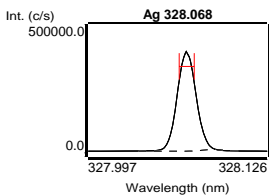
Total Silver #1 (Samp) **2/2/2012, 4:20:00 PM** **Tube 3**
Weight: 1 **Volume: 1** **Dilution: 1**

Label	Sol'n Conc.	Units	SD	%RSD	Int. (c/s)	Calc Conc.
Ag 328.068	10.1765	ppm	0.033928	0.3	323175	10.1765 ppm



Total Silver #2 (Samp) **2/2/2012, 4:21:35 PM** **Tube 4**
Weight: 1 **Volume: 1** **Dilution: 1**

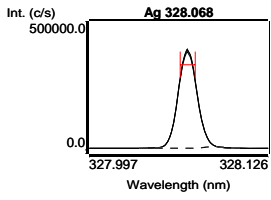
Label	Sol'n Conc.	Units	SD	%RSD	Int. (c/s)	Calc Conc.
Ag 328.068	10.3379	ppm	0.037259	0.4	328297	10.3379 ppm



Argento Laser di Ferioli -2. All Data Report 2/2/2012, 4:25:43 PM

Ionic Silver #1 (Samp) **2/2/2012, 4:23:20 PM** **Tube 5**
Weight: 1 **Volume: 1** **Dilution: 1**

Label	Sol'n Conc.	Units	SD	%RSD	Int. (c/s)	Calc Conc.
Ag 328.068	10.1921	ppm	0.130706	1.3	323671	10.1921 ppm



Ionic Silver #2 (Samp) **2/2/2012, 4:24:56 PM** **Tube 6**
Weight: 1 **Volume: 1** **Dilution: 1**

Label	Sol'n Conc.	Units	SD	%RSD	Int. (c/s)	Calc Conc.
Ag 328.068	10.0795	ppm	0.064949	0.6	320095	10.0795 ppm

